

EnviroTech

GIS Products & Services Division

One Company, One Source



EnviroTech's GIS Products & Services Division provides geographic information systems (GIS) services and equipment to utilities, local governments, and institutions throughout the U.S. and around the world.

We provide:

- GIS Application Design/
Development/Implementation
- Data Base Development/
Maintenance
- GIS Consulting
- GIS Data Maintenance
- GPS and GIS Data Collection/
Integration
- Surveylab's ike Sales & Training

GIS Products & Services Div
ike Distributor
Attn: Jerry Lloyd
161 Andrew Dr. Suite 200
Stockbridge, GA 30281
770-506-8292 Work
jerry@envirotechcorp.com
www.envirotechcorp.com

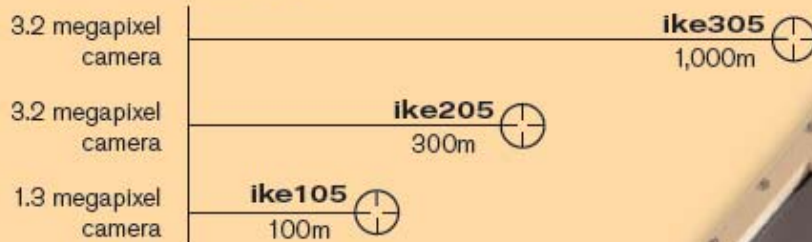
ike

An Integrated Remote Data Capture Device used by military forces around the world in a variety of missions in many different countries. No other mapping device is faster or more complete.

In a recent test ike competed against a well known data capture device and was scored in three different areas:

- **Accuracy** – ike was 8% more accurate, because satellite shadow was not a problem
- **Speed** – ike completed the exercise 31% faster, because the data could be collected from a distance
- **Number of points mapped** – ike captured 46% more data points, because satellite shadow was not a problem.

The ike range



ike is the world's only totally integrated, ruggedized, hand-held device for collecting geospatial data with digital instrumentation. **ike** seamlessly integrates and synchronizes a global positioning system (GPS), laser distance meter, digital camera, compass, inclinometer, geographical information system (GIS), and personal digital assistant (PDA) running the Microsoft® Windows Mobile 5 operating system. These tools provide operators with a rapid, safe, and reliable way to gather geospatial data, from a position up to 1000 meters away. Annotated with images and text, e.g., capture and review a target position and photo, add attribute data to the feature, review and add photos, and view the new feature on a map. The instrument's database stores and shares data, and its automated GIS-based system facilitates data analysis, interpretation, and reporting.

SAFE and ACCURATE: Collect target data from a distance of up to 1000 meters. **ike** collects data where access is difficult or where GPS coverage is poor. The operator can accurately pinpoint the target's position without standing next to the target and exposing themselves to unnecessary danger. In areas of poor GPS coverage the operator can move to obtain a stronger signal and still collect accurate data about the target.

VERIFIABLE and FLEXIBLE: The seamless integration provided by **ike** stores a photograph, the geospatial position and any additional textual information chosen by the operator as one file. Data is captured without the usual input and transcription errors. Standard and customized data capture applications are available for **ike** allowing data transfer to a wide range of GIS databases.



Physical:

Size: 11.8 in x 4.3 in x 3.2 in

Weight: 2.65 lbs

Tripod Mount: Standard

Camera 1/4"

External Interfaces

Main Connector: Power/USB/
RS232/RTCM

External Antenna: TNC fe-
male

Touch Screen: Over LCD
display

Buttons: 4 user programmable
Environmental

Casing: Plastic (ABS + poly
carbonate)

Operating Temperature: 14°F
to +104°F

Storage Temperature: 05°F to
+140°F

Electrical

Battery: Internal rechargeable
Li-Polymer

Operation Time: 6 to 8 hours*

DC Input: 11 to 17 Vdc @
1.5A max

Charging Time: 3 - 4 hours

Laser Distance Meter:

Range: up to 1km

Accuracy: ±0.5m + 0.5% of
range

Wavelength: 905nm (invisible
infrared)

Safety: Safe to the naked eye
over any distance

21.CFR1040.10

IEC60825-1:2001 Class 3R

Display:

Screen Size: 3.5" diagonal

Screen Resolution:

64k color Transflective TFT

Viewable Image: 320 x 240

Computer Processor:

624MHz Intel® PXA 270 processor

RAM: 64MB RAM

Non-volatile System Memory:

128MB Flash ROM

Non-volatile Storage Memory:

Removable SD card 1GB (std)

Operating System:

Microsoft Windows Mobile 5™

Communication:

USB 2, Bluetooth, Wi-Fi and RS232

GPS:

Channels: 12 channel parallel "all in
view" tracking

Frequency: nL1 C/A code and carrier
phase (1Hz)

Autonomous Position Accuracy:
< 5m (SEP)

DGPS Position Accuracy:
< 1m (SEP)**

Typical Times:

First Fix (Cold Start): 2.5 min

First Fix (Warm Start): 45 sec

First Fix (Hot Start): 22 sec

Multipath Mitigation: Yes

DGPS Real Time: RTCM-SC104
Messages

DGPS Post Processing: Optional

SBAS (WAAS, EGNOS):
Supported

Digital Camera:

(depending on model)

Captured Image Resolution:

640 x 480, 1280 x 1024,

1600 x 1200, or 2048 x 1536

1.3 or 3.2 Mega pixel

24 bit color

Output Image Format:

JPEG or Bitmap

Digital Compass:

Accuracy (Tilt 0° to 30°): 3.0° RMS

Accuracy (Tilt 30° to 60°): 4.0° RMS

Inclinometer:

Roll and Pitch Range: ± 60°

Accuracy (0° to 30°): 0.4°

Accuracy (30° to 60°): 1.0°

Software:***

Data Capture Applications:

CSV file format

ArcPad™ shapefile format

Desktop synchronization:

ikeSync

Optional Software ***

DGPS Post Processing: ikeSync

including DGPS Post Processing
powered by Waypoint® GrafNav
Lite™

ESRI® ArcPad Application Builder
ike Software Development Kit

*depending on method of operation

**Sub-meter accuracy specification requires data to be collected with a minimum of five satellites, a maximum Position Dilution of Precision (PDOP) of four, minimum satellite Signal to Noise Ratio (SNR) of 30dB, minimum satellite elevation of fifteen degrees and reasonable multipath conditions. Ionospheric conditions, multipath signals or obstructions of the sky by buildings or dense trees may degrade precision by interfering with signal reception. Wide Area Augmentation System (WAAS) is only available in North America, European Geostationary Navigation Overlay Service (EGNOS) is only available in Europe.

***other third party applications are available for ike

EnviroTech offers ike Rental Program

Rentals *

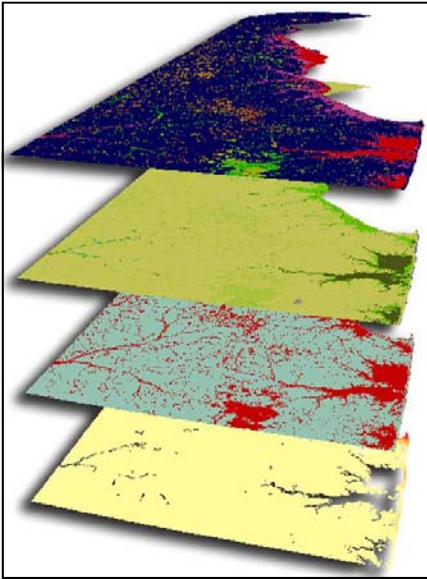
day	\$ 70.00
week (7 days)	\$ 350.00
month (30 days)	\$1,150.00

Leases *

6 month	\$ 975.00 per month
12 month	\$ 825.00 per month

*Does not include shipping

Enquire about a lease to purchase plan.



EnviroTech offers ike Training!

EnviroTech provides a complete ike training package. This one day course covers fundamental GPS concepts and how to employ the **ike** to collect & manage GIS data. Participants learn how to use ArcPad® 7.x, ArcView® 9.x in conjunction with the ike to provide a GIS solution. There is also a two-day Train-the-Trainer course available. Please call for details.



GPS the "ike way" – the Safe way.



EnviroTech

Please call Jerry Lloyd for a free consultation and demonstration of the technologies we employ. It's because of our commitment to these new technologies that we can offer you the most cost effective GIS data collection services and equipment available. If you are not sure of what you need, we will analyze your requirements and provide you with the service that best supports your company and project.

GIS Products & Services Division
ike Distributor
Attn: Jerry Lloyd
161 Andrew Dr. Suite 200
Stockbridge, GA 30281
770-506-8292 Work
Jerry@envirotechcorp.com
www.envirotechcorp.com